

# elab advanced

Up to 10 L

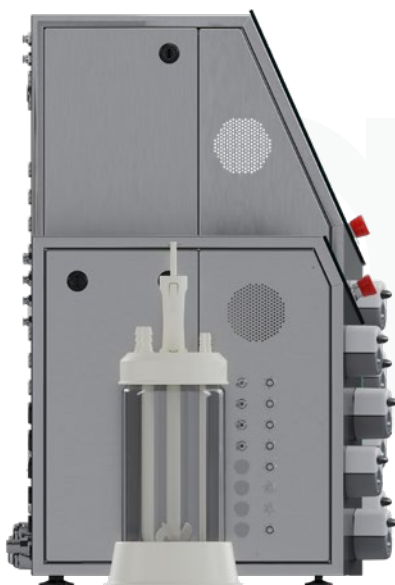


Designed with ***scalability and versatility*** in mind, eLAB Advanced empowers professionals across academia and industry to achieve optimal results in your bioprocesses.



The eLAB Advanced bioreactor is a versatile and efficient system engineered for the dynamic needs of bioprocessing laboratories. This bioreactor accommodates both single-use and multi-use vessels, providing **flexibility for a range of applications** and establishing a solid foundation for achieving high-quality biotechnological outcomes.

The **single-use vessel options**, ranging from 0.5 to 5 liters, are perfect for operations that require strict contamination control or expedited workflow transitions. For applications demanding durability and repeated use, the eLAB Advanced bioreactor seamlessly transitions to multi-use functionality, **supporting borosilicate glass and stainless steel vessels** from 1 to 10 liters, which ensures that your lab can adapt to various research demands without the need for multiple equipment.



Precision, control, and versatility are at the heart of the eLAB Advanced bioreactor design. It is crafted to foster an **optimal cultivation environment**, ensuring the highest quality yields in cell culture and microbial fermentation.

Discover the eLAB Advanced bioreactor and its **full range of capabilities** to see how it can improve your laboratory's productivity.

From top to bottom: Twin unit, Multi unit, Single use vessel.

<sup>1</sup> Each Multi module can connect up to two vessels.

# Key Functionalities

## eLAB Advanced

|                                       |   |
|---------------------------------------|---|
| Working volumes                       | 0.5, 1, 2, 5 and 10 L                               |
| Scalable vessels                      | Up to 12 independent vessels                        |
| Configuration                         | Microbial / Cell culture                            |
| Vessel material                       | Stainless Steel / Borosilicate glass / PP and PA 12 |
| Integrated peristaltic pumps          | 4x for acid, base, antifoam and media addition      |
| Jacketed vessel                       | Included  |
| Temperature control                   | Included  |
| Stirrer speed control                 | Included  |
| DO control                            | Included  |
| pH control                            | Included  |
| Foam control                          | Included  |
| Mass flow controller for gas addition | Included  |
| Recipes management                    | Included  |
| User's management                     | Included  |
| Reports                               | Included  |
| TECNIC OPC server                     | Included  |
| eR&ID   eADVANCED software            | Included  |
| Servomotor agitation                  | Included  |
| Sampling kit                          | Included  |

| Control Unit                 | Twin                        | Multi           |
|------------------------------|-----------------------------|-----------------|
| Dimmensions (WxHxD) (mm)     | 500x623x819                 | 500 x 623 x 503 |
| Weight approx (Kg)           | 60                          | 37              |
| Power supply                 | 230 VAC, 50 Hz              |                 |
| Consumption                  | 14A                         |                 |
| Non-product contact material | Stainless steel AISI 304    |                 |
| Product contact material     | Stainless steel AISI 316L   |                 |
| Controller type              | Industrial PLC              |                 |
| Operation/HMI Interface      | Intouch Screen 15" / eSCADA |                 |



Stainless Steel Vessels  
2 L, 5 L



Borosilicate Glass Vessels  
1 L, 2 L, 5 L, 10 L



Single Use Vessels  
0.5 L - 5 L



Technical data subject to change without notice.  
© TECNIC Bioprocess Solutions.







# WolfLabs

**Pricing on any accessories shown can be found by keying the part number into the search box on our website.**

The specifications listed in this brochure are subject to change by the manufacturer and therefore cannot be guaranteed to be correct. If there are aspects of the specification that must be guaranteed, please provide these to our sales team so that details can be confirmed.

**[www.wolflabs.co.uk](http://www.wolflabs.co.uk)**

**Tel : 01759 301142**

**Fax : 01759 301143**

**[sales@wolflabs.co.uk](mailto:sales@wolflabs.co.uk)**

Please contact us if this literature doesn't answer all your questions.